



International Water Projects is an environmental and water engineering company focused on the delivery of potable water and environmentally sound sanitation, wastewater and sewerage systems.

We operate equally well in major cities or in remote international destinations, and on designs for a million people or just a few. We advocate water cycle management. Our consultants and engineers have operated in over 50 countries bringing un-biased, and cutting edge thinking to difficult water and wastewater problems.

Our team has worked on projects as diverse as environmental engineering in India, Saudi Arabia, Iran, and China, leak detection in Chicago, environmental assessments in the Antarctic, pumping projects in Zimbabwe, eutrophication mitigation in the Pacific, sewerage projects in South Africa, and recycling and irrigation projects in New Zealand.



What Sort of Project Do You Have?

- a new resort
- eutrophication mitigation
- a land development
- Environmental impact assessment
- a remote mine site
- a failing sewerage treatment plant
- troublesome effluent
- overloaded infrastructure

IWP engineer innovative environmentally sound solutions to your water and waste water needs.

One Person or One Million

IWP are not manufacturers of a product. We believe that the first step in any project is to identify the problem and specify the correct outcome.

It is only then that we would begin to make a recommendation.

Our team constantly survey what technology is available and only recommend what we believe is required.

Projects as small as sewerage and water for a single home or as large as a city are all treated with importance.



We Go Anywhere

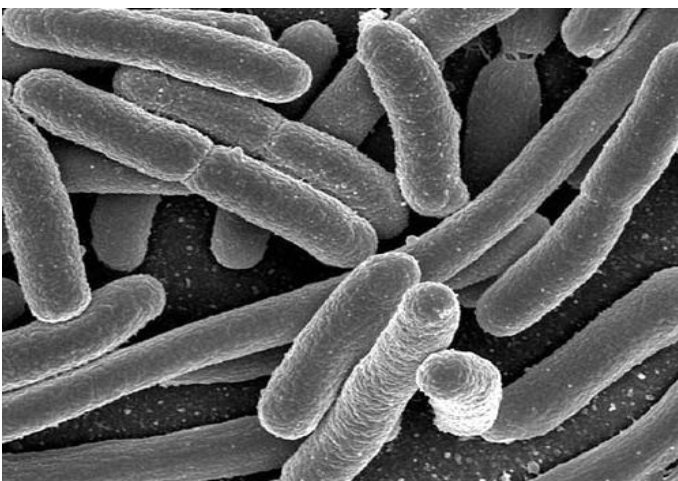
With experience in over 50 countries our mobile emergency team is equipped to operate anywhere. From the deserts of the Middle East to the chilling windswept Antarctica, our team have been there.

Commercial, Industrial, Domestic, Aid and Relief

‘Catastrophe’, ‘emergency’, and ‘disaster’ are words we respond to. We are trained to operate in difficult terrain and unsupported in remote locations. Water and wastewater is a key part of any aid and relief endeavour.

Often we have been the only ones operating in a war swept or disease ridden landscape. People matter to us and much of our work has been in the worst areas of developing nations bringing life-giving water or dealing with the effects of untreated or mismanaged wastewater.

Obviously the ability to operate in stressful environments has equipped us to deliver innovative and cutting edge solutions in any environment.



Water Borne Disease

One of the key areas we have had experience in is dealing with mismanaged wastewater and the resultant water borne diseases such as Cholera and Typhoid. In addition our projects minimise:

Campylobacteriosis, Dengue, Diarrhoea, Giardiasis, Hepatitis, Hookworm infection, Leptospirosis, Malaria, and a host of other diseases.



Life-Giving Water

Potable water is a luxury most of the world's population do not enjoy. The contamination cycle concentrates the pathogenic nature of many water supplies. The secret to increasing water quality is to first deal with wastewater. In developing countries four-fifths of all the illnesses are caused by water-borne diseases, with diarrhoea being the leading cause of childhood death.



Globally 1.1 billion people lack access to improved drinking water sources and 2.4 billion to adequate sanitation. This is where our heart is as an organisation. Our question is, "how is it possible that so many people suffer from something which is so easily remedied?"



Water Quality

Sampling and monitoring are an important aspect of both the investigation process and ongoing management.

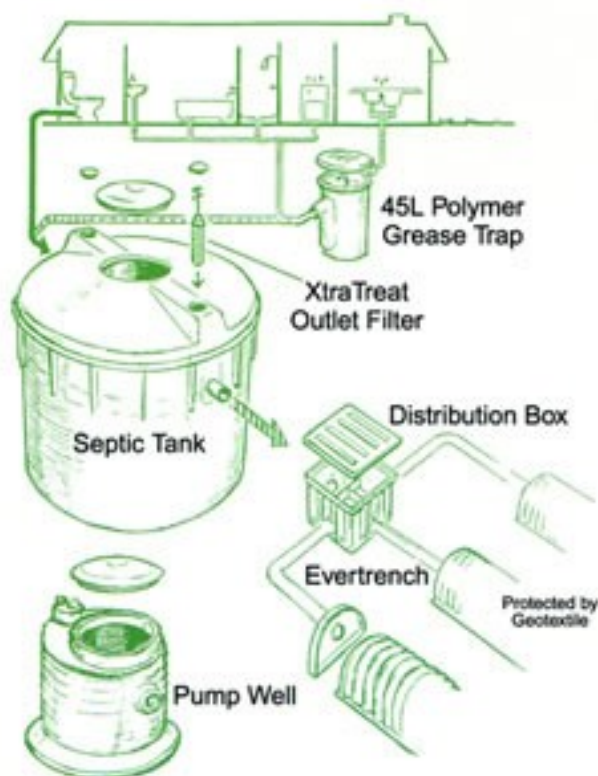


IWP have extensive experience in dealing with the chemical and biological aspects of water quality.



Wastewater Technology

In many parts of the world even pit latrines are a luxury. The pinnacle of pit latrine design is the UN designed Ventilated Improved Pit Latrines (VIP Latrine). Septic systems still have a useful role to play where finance is limited and in developing countries. Correctly designed and installed septic systems have a large impact on wastewater management and public health. There are some instances where we would recommend a polymer septic tank system and a modern sub-surface distribution system.



Modern Sub-surface Distribution

These systems include an efficient sub-surface effluent distribution network. The specially designed effluent distribution system ensures the safest disposal of the liquid effluent.

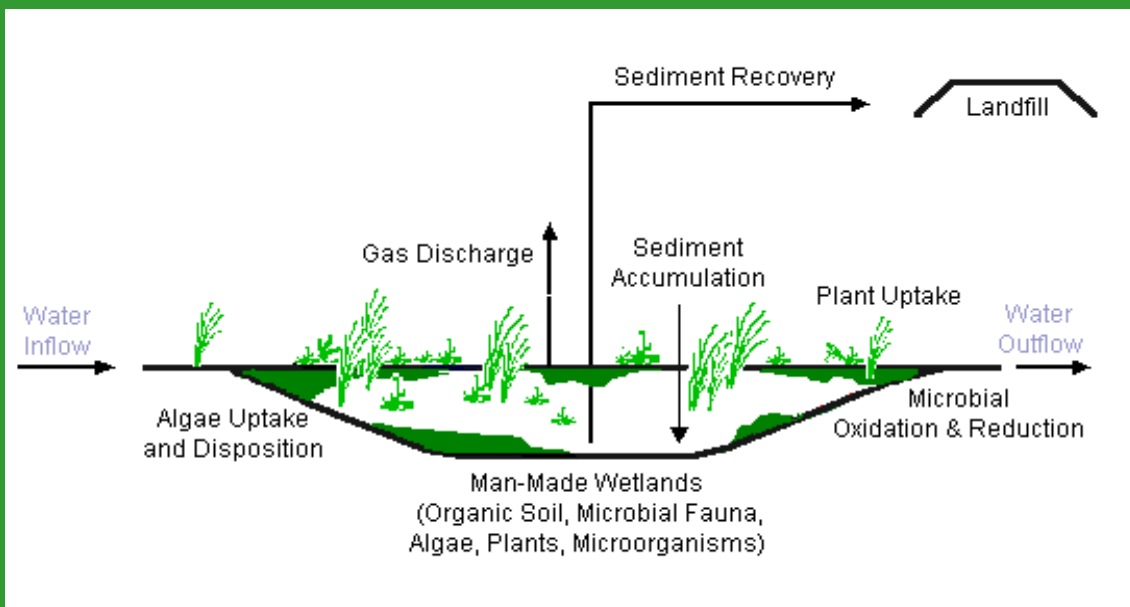
We recommend technology that in the future can be upgraded to provide secondary treatment. The initial capital cost of a septic system is about a quarter of a secondary system and the instant benefit to the environment is still quantifiably better than pit latrines.

These systems are light and easily transported. Nearly 40 systems can be transported in a single container for rapid deployment.

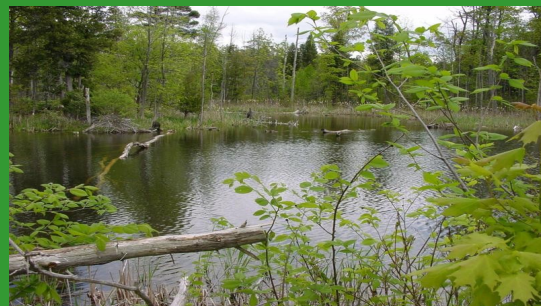


Secondary Treatment sand Nutrient Removal

A number of decentralised wastewater systems now produce secondary treated water suitable for subsurface irrigation. Secondary treatment can be achieved through a number of processes including a biolytic process or through conventional means such as activated sludge and anaerobic and aerobic technology. All have their place. If the effluent is passing directly into water ways then nutrient removal could be necessary. Artificially constructed wetlands can assist in nutrient removal in areas where coral reefs and marine life are threatened.



While secondary treatment is effective in removing BOD and sediment nutrients such as nitrogen and phosphorus may still require additional attention. These nutrients promote eutrophication. Artificially constructed wetlands provide both an aesthetic and ecological benefit as well as being effective in nutrient removal.



Tertiary Treatment

Tertiary treatment with a high level of nutrient removal allows us to recycle water through toilets or irrigation, and gives us a discharge quality which will not harm the environment. This is increasingly becoming the minimum standard of treatment worldwide.



Large Scale Tertiary and Recycling Treatment Systems

Other treatment systems have been designed for larger populations. Effluent can be treated to either tertiary quality or completely recycled to drinking water standards.

These types of system are suitable for large camps, townships, military bases, island communities and resorts. They are a modern answer to failing infrastructure or for towns and island communities where the existing infrastructure has reached capacity.





Our Team

IWP have a broad based team with global experience including:

- Water quality specialists
- Eutrophication mitigation specialists
- Community health specialists
- Civil and agricultural engineers
- Specialists in 3rd world development
- Aid and relief specialists
- Project engineers
- Construction managers
- Water borne disease specialists

Our team have been involved in projects all over the world including South Africa, Malawi, Zimbabwe, Zambia, Iran, Saudi Arabia, Yemen, Australia, New Zealand, North America, China, Singapore, Malaysia, Thailand, Indonesia, Fiji, The Chatham Islands, Papua New Guinea and Antarctica.



International Water Projects Pty Ltd

PO BOX 459, MT OMMANEY, QUEENSLAND, 4074,
AUSTRALIA

Australian Head Office

Australian Head Office

Fiji Office

Email:

Web:

Phone: +61 7 3279 0222

Fax: +61 7 3279 0292

Mobile: +679 9020 509

info@internationalwaterprojects.com

www.internationalwaterprojects.com